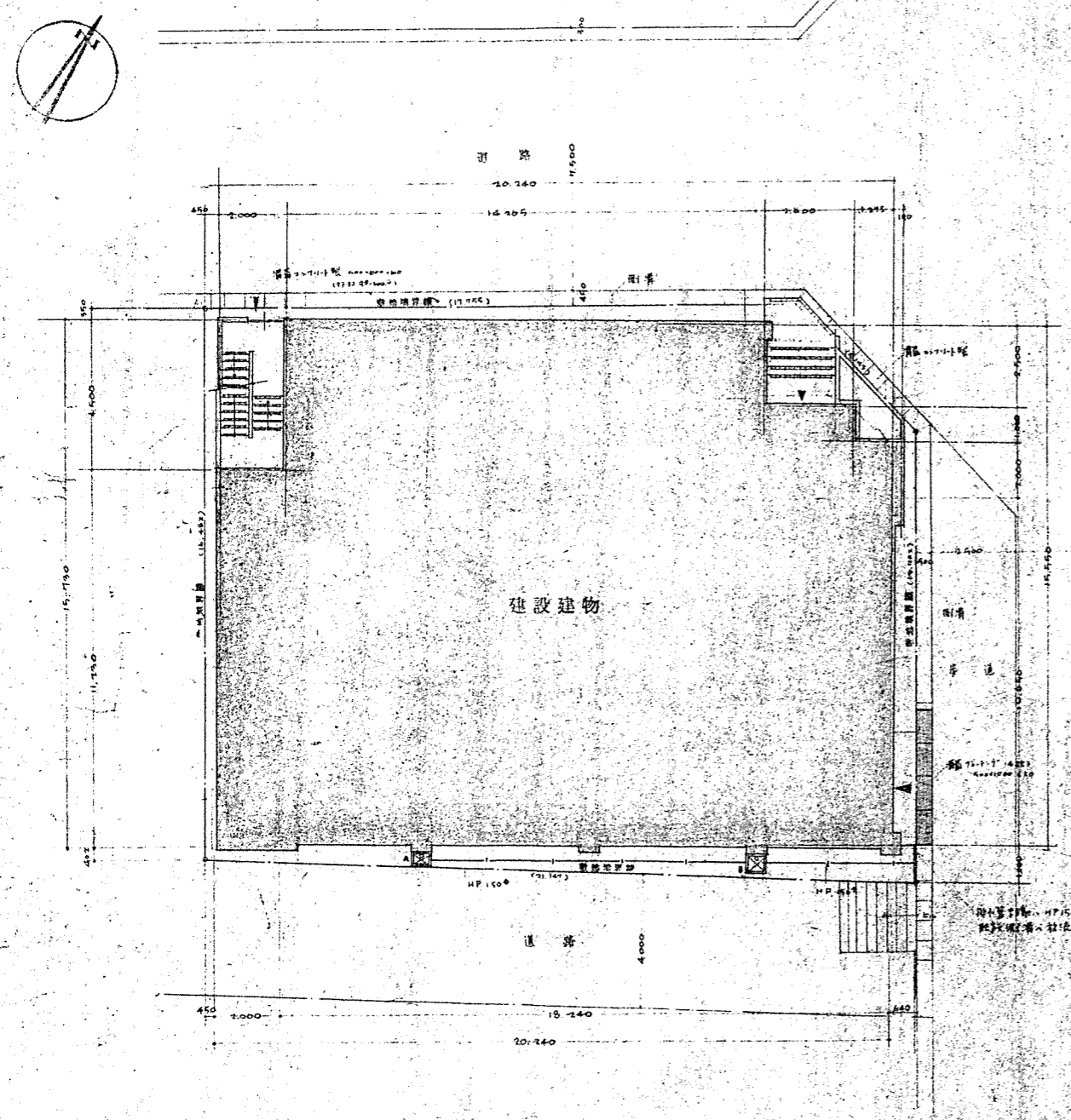
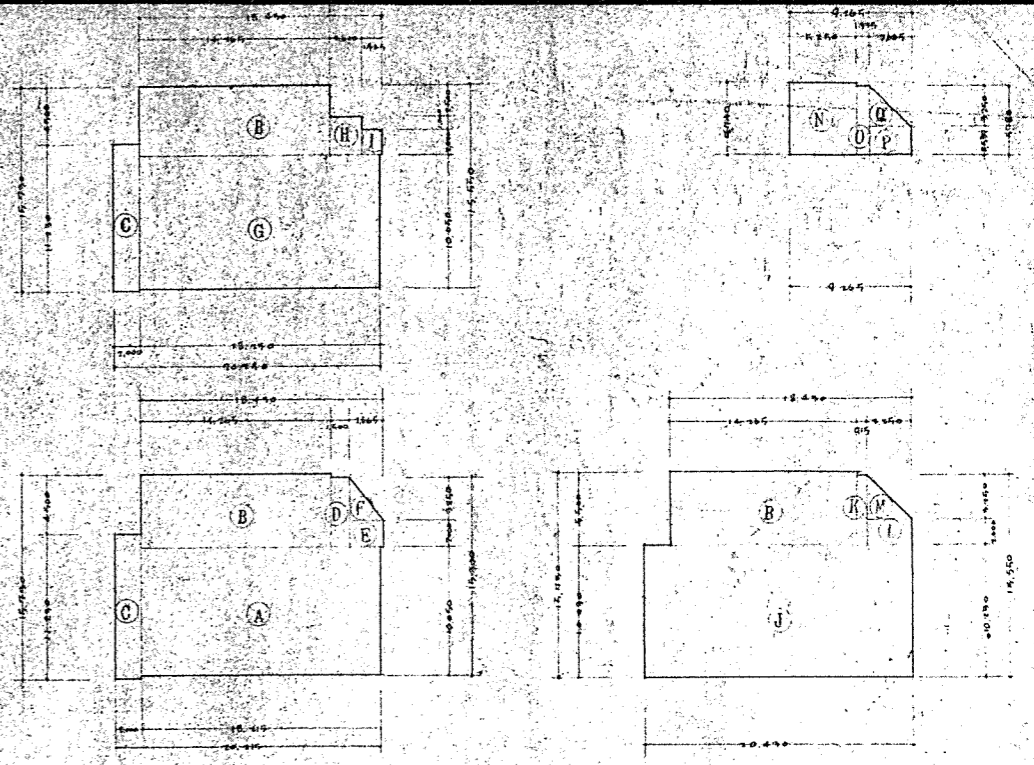
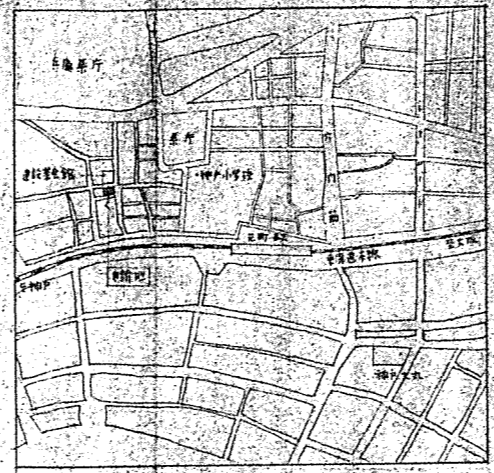


符号	A × B	H
A	300 × 300	300
B	400 × 400	400



床面積表 (単位 m²)

計算式	地面	1 階	2 階	3 階	4 階	塔屋	合計
(A)	18.216 × 20.200	183.261					183.261
(B)	14.000 × 3.300	46.200	46.200	46.200	46.200		184.800
(C)	11.000 × 2.200	24.200					24.200
(D)	5.000 × 2.100	10.500					10.500
(E)	2.000 × 2.000	4.000					4.000
(F)	2.000 × 2.000	4.000					4.000
(G)	18.216 × 10.000	182.160					182.160
(H)	2.000 × 2.000	4.000					4.000
(I)	18.216 × 2.000	36.432					36.432
(J)	20.000 × 10.000		200.000	200.000	200.000		600.000
(K)	5.000 × 2.015		4.804	4.804	4.804		14.412
(L)	4.000 × 2.000		4.000	4.000	4.000		12.000
(M)	5.000 × 2.200		4.281	4.281	4.281		12.843
(N)	5.000 × 6.000					30.000	30.000
(O)	5.000 × 1.000					5.000	5.000
(P)	2.500 × 2.500					6.250	6.250
(Q)	3.000 × 2.000					6.000	6.000
合計		497.067	189.093	400.000	400.000	40.000	1,426.160

建築面積 900.415

敷地面積 354.360

配置図 1/100